



# Pandaw River Cruises

Legendary Cruises on Myanmar Rivers

Short Cruises 2007-2008 Season

1 night, 2 nights

Mandalay to Bagan, Bagan to Mandalay

## Mingalabar!

If the name of *Pandaw River Cruises* evokes images of sophisticated cruises, it is also associated with exemplary standards of service in Myanmar hotel industry. We also boast high levels of health and hygiene, maintenance and safety training according to international conventions.

Because of your loyalty, the original *Pandaw* philosophy is well alive today and the path that have been open 12 years ago will be followed, making the genuine *Pandaw* concept the best cruise experience ever on Myanmar Rivers.

For 2007-2008 season, given the anticipated high demand for short cruises, we will use the newer and larger *Pandaw IV* during November to March, offering 28 cabins. By consulting us, you can now book the cabin of your choice, depending of availability. We will take care of the wellness of your clients -our passengers- offering them spa on board. Their cultural and leisure activities will also benefit from our long cruises experience.

As the next season should be a Grand Cru for all of us, we, at *Pandaw River Cruises* office, will make every effort to facilitate your work by providing necessary tools, helping you to elaborate fast quotations and attractive proposals.

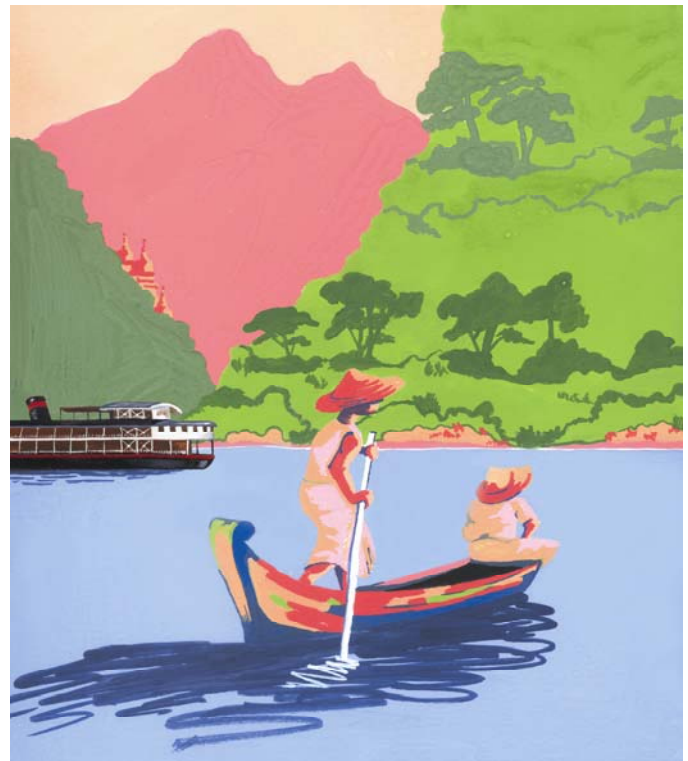
Thank you again for your support and loyalty

Jacques Boiteau  
Country Manager

Phone  
(95 1) 662 857  
(95 1) 662 858  
(95 1) 662 859  
(95 1) 662 866  
Extension 219

E-mail  
[shortcruise@pandaw.com](mailto:shortcruise@pandaw.com)

Web  
[www.pandaw.com](http://www.pandaw.com)



Office: Monday to Friday 9H00-17:30 – Saturday 9H00-13H00  
Pandaw River Cruises—2<sup>nd</sup> floor room 219 Dusit Inya Lake Hotel 37 Kaba Aye Pagoda Road Yangon

<b>Content</b>	<b>Page</b>
Sales tool: Why systematically propose a cruise to your clients.....	1
Myanmar Pandaw Fleet: Pandaw II.....	2
Myanmar Pandaw Fleet: Pandaw IV.....	3
Equipment, Safety, Insurance .....	4
Schedules, Itineraries: .....	5
Departure Dates.....	6,7
October 2007– March 2008 Cruises Rates, Charter Rates .....	8
<b>NEW!</b> What a Pandaw cruise price includes and does not includes.....	9
Meals on board, <b>NEW!</b> Passengers’ cultural and leisure activities.....	9
Passengers’ wellness <b>NEW!</b> Massage onboard.....	9
<b>NEW!</b> Booking Conditions.....	10
<b>NEW!</b> Terms and Conditions of Carriage.....	11

**Sales tool: Why systematically propose a cruise to your clients:**

- The stunning Irrawaddy River is a must to be witnessed and one cannot explore Myanmar without considering its economical and subsistence river system.
- Your clients enjoy discovering the other Myanmar, far away from the mass tourism.
- The river cruise with a luxurious environment, premium service and excellent meals generate over expectation. A cruise always highlights a voyage.
- A river cruise is a pause within an exhausting journey.
- A one hour bumpy and dusty transfer to Mandalay airport can be avoided. It is also much more pleasant to cruise than to fly.
- As tourism in Myanmar increases, it becomes difficult to get hotel availabilities during the high season.
- A standard Pagan-Mandalay journey, including flight, accommodation, and ground handling generates the same mark-up as a 2-night cruise on *Pandaw* with much less hassle in term of reservation, bookings and billing!
- A cruise is a reliable product offering to agencies peace of mind during 2 days.

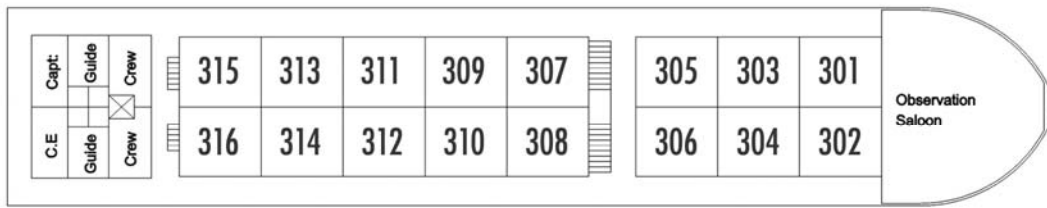


**MYANMAR PANDAW FLEET**

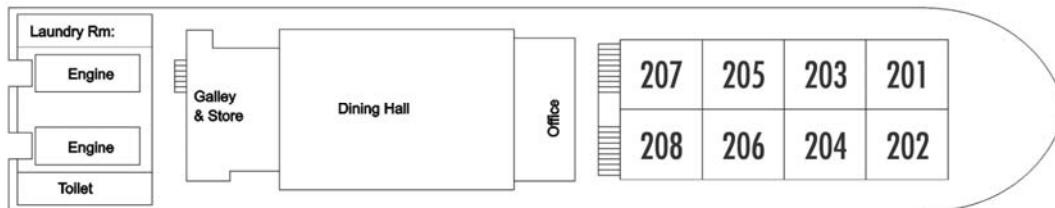
**Pandaw II**



**ELEVATION**



**UPPER DECK**



**MAIN DECK**

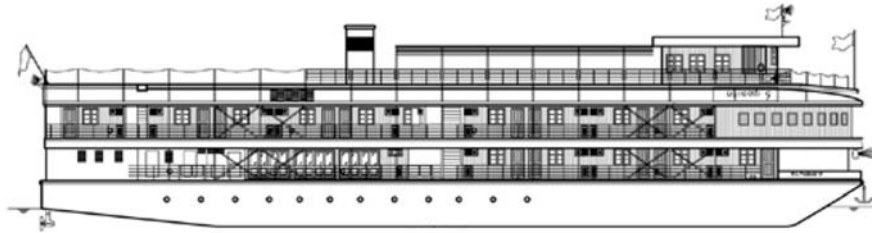
**Cabins** **24**  
**16 cabins on Upper Deck**  
**8 cabins on Main Deck**

Length 180ft / 55m  
 Beam 34ft / 10m  
 Draft 3ft / 90cm  
 Berths 48 pax  
 Decks 3: Main, Upper, Sun  
 Engines 2 x 350 bhp Catepillar  
 Propulsion Schotel outboard  
 Built Yangon 2001

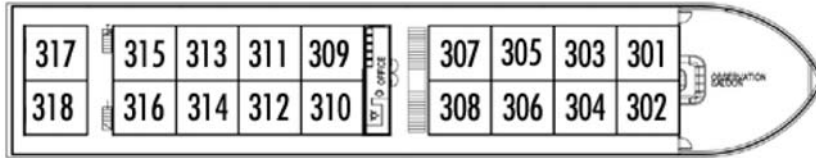


**MYANMAR PANDAW FLEET**

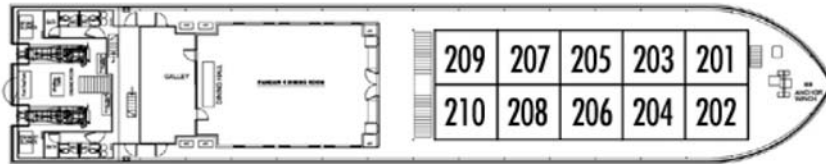
**Pandaw IV**



**ELEVATION**



**UPPER DECK**



**MAIN DECK**



**LOWER DECK**

**Cabins**

**28**  
**18 cabins on Upper Deck**  
**10 cabins on Main Deck**

Length 180ft / 55m  
 Beam 34ft / 10m  
 Draft 3ft / 90cm  
 Berths 56 pax  
 Decks 4: Lower, Main, Upper, Sun  
 Engines 2 x 400 bhp Cummins  
 Propulsion Schotol outboard  
 Built Yangon 2004



**Pandaw River Cruises**  
 Legendary Cruises on Myanmar Rivers  
 2007-2008 Season

**EQUIPMENT**

Communications: Cell phone, internal phone system (Crew).

**SAFETY**

Smoke detectors in all cabins and public places, emergency lighting and generator, fire pump, hydrants and hoses, fire extinguishers, life jackets for all, life rafts.

**NAVIGATION**

Navigation lights, ships horn, searchlight.

**AMENITIES**

On board laundry, bakery, fully equipped galley, refrigeration units, air conditioning for all inside areas.

**WATER**

Water treatment plants for desalination, de-sedimentation and purification.  
Sewage: Micro-biotic treatment plants.

**CLASS**

Myanmar DMA Inland Water (based on Lloyds Inland Water Class).

**INSURANCE**

P&I policies. Over USD 45 million per vessel.



## SCHEDULES AND ITINERARIES

### Departs

Monday	11:00	Mandalay to Pagan	1 night
Tuesday	12:00	Pagan to Mandalay	2 nights
Thursday	12:00	Mandalay to Pagan	2 nights
Saturday	12:00	Pagan to Mandalay	2 nights

### Arrives

Tuesday	10:00
Thursday	10:00
Saturday	10:00
Monday	10:00

\*\*\*\*\*

### 1 night itinerary

#### Downstream

- Day 1 11:00 Depart Mandalay with cruising through lunch and the afternoon.  
Day 2 Visit Their gone in the early morning and arrive 10:00 at Pagan.

\*\*\*\*\*

### 2-night itinerary

#### Upstream

- Day 1 12:00 depart Pagan with cruising through lunch and the afternoon.  
Day 2 Explore the villages of Their Gone in the morning and Yandabo in the afternoon.  
Day 3 10:00 Arrive at Mandalay.

#### Downstream

- Day 1 12:00 depart Mandalay with cruising through lunch and the afternoon.  
Day 2 Explore the villages of Yandabo in the morning and Their gone in the afternoon.  
Day 3 10:00 arrive at Pagan.



<b>CRUISE REF</b>	<b>SHIP NAME</b>	<b>ITINERARY</b>	<b>EMBARKATION</b>	<b>DISEMBARKATION</b>
RB60	Pandaw II	2-night Pagan Mandalay	13-Oct-07	15-Oct-07
RB61	Pandaw II	1 night Mandalay Pagan	15-Oct-07	16-Oct-07
RB62	Pandaw II	2-night Pagan Mandalay	16-Oct-07	18-Oct-07
RB63	Pandaw II	2-night Mandalay Pagan	18-Oct-07	20-Oct-07
RB64	Pandaw II	2-night Pagan Mandalay	20-Oct-07	22-Oct-07
RB65	Pandaw II	1 night Mandalay Pagan	22-Oct-07	23-Oct-07
RB66	Pandaw II	2-night Pagan Mandalay	23-Oct-07	25-Oct-07
RB67	Pandaw II	2-night Mandalay Pagan	25-Oct-07	27-Oct-07
RB68	Pandaw II	2-night Pagan Mandalay	27-Oct-07	29-Oct-07
RB69	Pandaw II	1 night Mandalay Pagan	29-Oct-07	30-Oct-07
RB70	Pandaw II	2-night Pagan Mandalay	30-Oct-07	01-Nov-07
RB71	Pandaw II	2-night Mandalay Pagan	01-Nov-07	03-Nov-07
RB72	Pandaw II	2-night Pagan Mandalay	03-Nov-07	05-Nov-07
RB73	Pandaw II	1 night Mandalay Pagan	05-Nov-07	06-Nov-07
RB74	Pandaw II	2-night Pagan Mandalay	06-Nov-07	08-Nov-07
RB75	Pandaw II	2-night Mandalay Pagan	08-Nov-07	10-Nov-07
RB76	Pandaw II	2-night Pagan Mandalay	10-Nov-07	12-Nov-07
RB77	Pandaw II	1 night Mandalay Pagan	12-Nov-07	13-Nov-07
RB78	Pandaw II	2-night Pagan Mandalay	13-Nov-07	15-Nov-07
RB79	Pandaw II	2-night Mandalay Pagan	15-Nov-07	17-Nov-07
RB80	Pandaw II	2-night Pagan Mandalay	17-Nov-07	19-Nov-07
RB81	Pandaw II	1 night Mandalay Pagan	19-Nov-07	20-Nov-07
RB82	Pandaw II	2-night Pagan Mandalay	20-Nov-07	22-Nov-07
RB83	Pandaw IV	2-night Mandalay Pagan	22-Nov-07	24-Nov-07
RB84	Pandaw IV	2-night Pagan Mandalay	24-Nov-07	26-Nov-07
RB85	Pandaw IV	1 night Mandalay Pagan	26-Nov-07	27-Nov-07
RB86	Pandaw IV	2-night Pagan Mandalay	27-Nov-07	29-Nov-07
RB87	Pandaw IV	2-night Mandalay Pagan	29-Nov-07	01-Dec-07
RB88	Pandaw IV	2-night Pagan Mandalay	01-Dec-07	03-Dec-07
RB89	Pandaw IV	1 night Mandalay Pagan	03-Dec-07	04-Dec-07
RB90	Pandaw IV	2-night Pagan Mandalay	04-Dec-07	06-Dec-07
RB91	Pandaw IV	2-night Mandalay Pagan	06-Dec-07	08-Dec-07
RB92	Pandaw IV	2-night Pagan Mandalay	08-Dec-07	10-Dec-07
RB93	Pandaw IV	1 night Mandalay Pagan	10-Dec-07	11-Dec-07
RB94	Pandaw IV	2-night Pagan Mandalay	11-Dec-07	13-Dec-07
RB95	Pandaw IV	2-night Mandalay Pagan	13-Dec-07	15-Dec-07
RB96	Pandaw IV	2-night Pagan Mandalay	15-Dec-07	17-Dec-07
RB97	Pandaw IV	1 night Mandalay Pagan	17-Dec-07	18-Dec-07
RB98	Pandaw IV	2-night Pagan Mandalay	18-Dec-07	20-Dec-07
RB99	Pandaw IV	2-night Mandalay Pagan	20-Dec-07	22-Dec-07
RB100	Pandaw IV	2-night Pagan Mandalay	22-Dec-07	24-Dec-07
RB101	Pandaw IV	1 night Mandalay Pagan	24-Dec-07	25-Dec-07
RB102	Pandaw IV	2-night Pagan Mandalay	25-Dec-07	27-Dec-07
RB103	Pandaw IV	2-night Mandalay Pagan	27-Dec-07	29-Dec-07
RB104	Pandaw IV	2-night Pagan Mandalay	29-Dec-07	31-Dec-07



RB105	Pandaw IV	1 night Mandalay Pagan	31-Dec-07	01-Jan-08
RB106	Pandaw IV	2-night Pagan Mandalay	01-Jan-08	03-Jan-08
RB107	Pandaw IV	2-night Mandalay Pagan	03-Jan-08	05-Jan-08
RB108	Pandaw IV	2-night Pagan Mandalay	05-Jan-08	07-Jan-08
RB109	Pandaw IV	1 night Mandalay Pagan	07-Jan-08	08-Jan-08
RB110	Pandaw IV	2-night Pagan Mandalay	08-Jan-08	10-Jan-08
RB111	Pandaw IV	2-night Mandalay Pagan	10-Jan-08	12-Jan-08
RB112	Pandaw IV	2-night Pagan Mandalay	12-Jan-08	14-Jan-08
RB113	Pandaw IV	1 night Mandalay Pagan	14-Jan-08	15-Jan-08
RB114	Pandaw IV	2-night Pagan Mandalay	15-Jan-08	17-Jan-08
RB115	Pandaw IV	2-night Mandalay Pagan	17-Jan-08	19-Jan-08
RB116	Pandaw IV	2-night Pagan Mandalay	19-Jan-08	21-Jan-08
RB117	Pandaw IV	1 night Mandalay Pagan	21-Jan-08	22-Jan-08
RB118	Pandaw IV	2-night Pagan Mandalay	22-Jan-08	24-Jan-08
RB119	Pandaw IV	2-night Mandalay Pagan	24-Jan-08	26-Jan-08
RB120	Pandaw IV	2-night Pagan Mandalay	26-Jan-08	28-Jan-08
RB121	Pandaw IV	1 night Mandalay Pagan	28-Jan-08	29-Jan-08
RB122	Pandaw IV	2-night Pagan Mandalay	29-Jan-08	31-Jan-08
RB123	Pandaw IV	2-night Mandalay Pagan	31-Jan-08	02-Feb-08
RB124	Pandaw IV	2-night Pagan Mandalay	02-Feb-08	04-Feb-08
RB125	Pandaw IV	1 night Mandalay Pagan	04-Feb-08	05-Feb-08
RB126	Pandaw IV	2-night Pagan Mandalay	05-Feb-08	07-Feb-08
RB127	Pandaw IV	2-night Mandalay Pagan	07-Feb-08	09-Feb-08
RB128	Pandaw IV	2-night Pagan Mandalay	09-Feb-08	11-Feb-08
RB129	Pandaw IV	1 night Mandalay Pagan	11-Feb-08	12-Feb-08
RB130	Pandaw IV	2-night Pagan Mandalay	12-Feb-08	14-Feb-08
RB131	Pandaw IV	2-night Mandalay Pagan	14-Feb-08	16-Feb-08
RB132	Pandaw IV	2-night Pagan Mandalay	16-Feb-08	18-Feb-08
RB133	Pandaw IV	1 night Mandalay Pagan	18-Feb-08	19-Feb-08
RB134	Pandaw IV	2-night Pagan Mandalay	19-Feb-08	21-Feb-08
RB135	Pandaw IV	2-night Mandalay Pagan	21-Feb-08	23-Feb-08
RB136	Pandaw IV	2-night Pagan Mandalay	23-Feb-08	25-Feb-08
RB137	Pandaw IV	1 night Mandalay Pagan	25-Feb-08	26-Feb-08
RB138	Pandaw IV	2-night Pagan Mandalay	26-Feb-08	28-Feb-08
RB139	Pandaw IV	2-night Mandalay Pagan	28-Feb-08	01-Mar-08
RB140	Pandaw IV	2-night Pagan Mandalay	01-Mar-08	03-Mar-08
RB141	Pandaw IV	1 night Mandalay Pagan	03-Mar-08	04-Mar-08
RB142	Pandaw IV	2-night Pagan Mandalay	04-Mar-08	06-Mar-08
RB143	Pandaw IV	2-night Mandalay Pagan	06-Mar-08	08-Mar-08
RB144	Pandaw IV	2-night Pagan Mandalay	08-Mar-08	08-Mar-08
RB145	Pandaw IV	1 night Mandalay Pagan	10-Mar-08	11-Mar-08
RB146	Pandaw IV	2-night Pagan Mandalay	11-Mar-08	13-Mar-08
RB147	Pandaw IV	2-night Mandalay Pagan	13-Mar-08	15-Mar-08
RB148	Pandaw IV	2-night Pagan Mandalay	15-Mar-08	17-Mar-08
RB149	Pandaw IV	1 night Mandalay Pagan	17-Mar-08	18-Mar-08
RB150	Pandaw IV	2-night Pagan Mandalay	18-Mar-08	20-Mar-08
RB151	Pandaw IV	2-night Mandalay Pagan	20-Mar-08	22-Mar-08
RB152	Pandaw IV	2-night Pagan Mandalay	22-Mar-08	24-Mar-08
RB153	Pandaw IV	1 night Mandalay Pagan	24-Mar-08	25-Mar-08
RB154	Pandaw IV	2-night Pagan Mandalay	25-Mar-08	27-Mar-08
RB155	Pandaw IV	2-night Mandalay Pagan	27-Mar-08	29-Mar-08
RB156	Pandaw IV	2-night Pagan Mandalay	29-Mar-08	31-Mar-08



## OCTOBER 2007-MARCH 2008 CRUISES RATES

### Agency Net Rates

Price per person

	<b>Twin</b>	<b>Single</b>
<b>1-night Cruise</b>	USD140	USD210
<b>2-night Cruise</b>	USD280	USD350

**NEW!** Flat rate for Main Deck and Upper deck

### Published Rates

	<b>Twin</b>	<b>Single</b>
<b>1-night Cruise</b>	USD233	USD350
<b>2-night Cruise</b>	USD467	USD584

### Groups and Tour leader, Guide

8+ cabins      1 FOC Officer cabin

15+ cabins      1 FOC Officer cabin + 1 FOC Main Deck or Upper Deck cabin.

## CHARTER

### Agency Net Rates

**Important: There are no Published rates**

A *Pandaw* ship may be chartered within a scheduled slot subject to there being no previous bookings for that slot.

Charters include all meals, fuel, port dues, but not ground handling, excursions or transfers at the start and end of the charter.

Charter parties receive a standard marine charter contract with different terms and conditions to scheduled departures.

<b>High Season</b>	Nov 07-March 08	USD 5.000 per night
<b>Shoulder Season</b>	Oct 07 and April 08	USD 4.000 per night
<b>Low Season</b>	May 08-Sept 08	<b>USD 2.000 per night</b>

Ship reposition charge if necessary: USD 500 per day of sailing to departure port.



### WHAT A PANDAW RIVER CRUISE PRICE INCLUDES

- English speaking guide
- All entrance fees
- Main meals
- Free flow of drinks:
  - Coffee and tea
  - Mineral water
  - Soft drinks
  - Local beers
  - **NEW!** Local spirits

### WHAT A PANDAW RIVER CRUISE PRICE DOES NOT INCLUDE

- Visa costs
- Hotels
- Transfers to and from the ship
- International and domestic flights
- Imported alcohols
- Laundry
- Fuel surcharges (see terms and conditions).

### MEALS ON BOARD

Breakfast and lunch are buffets and dinner is served at the tables with a table d'hôte selection of dishes. We offer a mixture of Asian and Western cuisine and there are always vegetarian dishes offered. Special diets may be catered for with advance notification. Exotic fruit, fresh vegetables, local fish are the preference of most of our passengers.



### PASSENGERS' CULTURAL AND LEISURE ACTIVITIES

Excursions with individual umbrella, individual isotherm bag.

Open bar 24 hours. Happy sundeck.

Thanakha make-up, Longyi wearing, Cooking class, selection of Books about Myanmar.

**NEW!** Binoculars, Chessboards and Cards.

**NEW!** Systematic sandbank cocktail.

### PASSENGERS' WELLNESS

**NEW!** Quality foot and body massage on demand.



## BOOKING CONDITIONS

These apply to individual cabin sales and not charters.

### Option terms

More than 120 days prior the departure date	30 days option
Between 120 days and 60 days	15 days option
Between 59 days and 30 days	7 days option
Between 29 days and 11 days	1 day option

Options must be confirmed by agents with pax names and once confirmed subject to any cancellation charges.

### **NEW! No deposit required**

We no longer ask for a deposit.

We do ask for pax names by 60 days or less prior to departure.

### **NEW! Final Payment**

Final balances must be paid 11 days before departure unless a 'Credit Facility' has been approved.

### **NEW! Cancellation terms**

Between 60 and 10 days prior to departure:	25% of contract rate
Between 11 days and day of departure or no show:	100% of contract rate

When you book you will be informed which vessel, the deck and cabin numbers and other relevant information.



## TERMS AND CONDITIONS OF CARRIAGE ON PANDAW SHIPS

1. Though every effort will be made to ensure that the published itinerary is followed as closely as possible, given uncertain river and other local conditions, all schedules and itineraries may be subject to alterations and delays at short notice.
2. The ship's purser and captain are jointly responsible for passengers' comfort and safety. Passengers must accept their decisions and instructions.
3. Whilst our crew do everything in their power to facilitate landings, access to the ship at certain river stations can be difficult, with steep and sometimes slippery river banks. Elderly passengers should consult their doctor to ensure that they are fit for travel. Wheel chairs are not allowed.
4. In the case of water levels being too high or low or defects to the vessel beyond the control of the company an alternative itinerary will be offered to passengers after consultation between the ship's captain and the company's management, subject to accommodation and meals being maintained on board the vessel unless by prior agreement with the passenger.
5. Should it prove difficult to embark or disembark passengers at the scheduled points the company are not liable to bear any extra cost of transporting passengers to and from the revised point of embarkation or disembarkation unless passengers or their agents have purchased a complete package tour which includes land services from us. Any reason for changing the points of embarkation or disembarkation can not count as a reason for cancelling this contract.
6. Passengers should seek advice from their doctor regarding relevant inoculations and prophylactics for travel to these countries.
7. Passengers must be fully insured to cover any risk of medical expenses and repatriation (which includes repatriation of remains) and the Company is in no way responsible for such liabilities. Passengers must settle before departure any medical bills incurred whilst on a company ship for doctor's attendance, drugs supplied, and any other medical facilities provided by the company for the passenger.
8. Once a booking has been received through a sales agent or directly from the passenger a contract exists between the Company and the passenger and these terms and conditions must be adhered to by both parties.
9. Unless otherwise agreed agents are responsible for the transfer of their passengers to and from the ship on time and in the event of a late arrival the ship is not obliged to delay departure thereby upsetting tight schedules.
10. The company accept no liability or responsibility for loss or damage to passenger's property whilst on board a company vessel.
11. During the river stops on the company provide an guide service in the English language. Foreign language guides must be pre booked and there may be extra charges for this. Personal guides must be booked at normal rates in passenger accommodation.
12. The company reserve the right to refuse to allow anyone on board if a ticket can not be produced and the company can not guarantee the exact allocation of cabins and deck location which may in the event of extenuating circumstances differ from the cabin number indicated on the ticket.
13. Within the ticket price fuel costs have been calculated on average prices as of the publication of this document. Should fuel prices rise by more than 10% from 1 April 2007 the company will



be entitled to impose a fuel supplement equivalent to the amount by which the fuel price exceeds the price allowed for in the contract.

14. It is not permitted to allow any species of animal on board.

15. Infants below the age of 4 years may sleep in their parent's cabin without extra charge but the company can not guarantee the availability of a cot. Children of 4 years and + must solely occupy a berth and pay full rate.

16. In the event of a dispute the law of the country in which the vessel is operating will apply.

17. The company reserves the right to change the vessel without notice.

18. Payment terms and cancellation policy is printed on an invoice issued for each booking whether for an individual or for a group. Passengers and their agents must abide these terms and the company reserve the right to either cancel an existing reservation or to refuse passage in the event that these terms have not been adhered to.

19. In the event that one passenger enters into a commercial or other form of relationship or arrangement with another passenger the company is no way liable for the obligations of one passenger to another passenger or any claim arising thereof.

20. For cruise departures where occupancy is less than 5 cabins the company reserve the right to cancel the departure giving all passengers with confirmed bookings **NEW! 60 days** prior notice of this intention. An alternative departure date will be offered subject to availability. If this alternative date is not acceptable to the passenger any downpayments made for the cancelled cruise will be refunded.

21. The company reserves the right to change a cabin allocated without notice and in the event that a passenger is downgraded to a cheaper cabin then the difference in cost between the cabins will be refunded to the passenger or the passenger's agents.

22. Force Majeure: in the case of circumstances beyond normal control, such as war, civil or political unrest, strikes, catastrophes, epidemics or disruption to fuel supplies for the vessel, the Company may cancel the cruise and there will be a full refund of all monies paid by the passenger. In the event of a cruise being cancelled as a result of the above force majeure situations following the commencement of that cruise period then monies will not be refunded.

